

1.8° 28mm High Torque Hybrid Stepper Motor

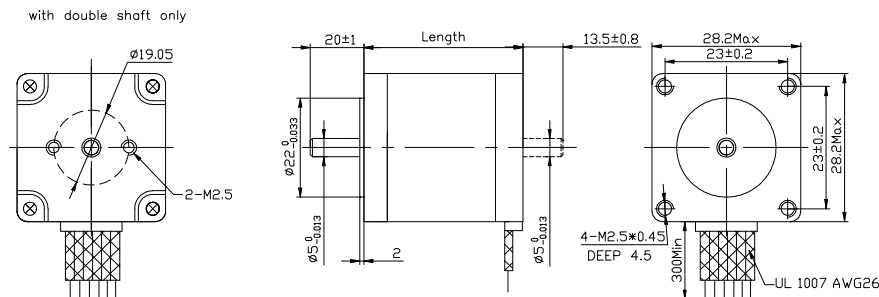
Item	Specifications
Step Angle	1.8°
Step Angle Accuracy	±5% (full step, no load)
Resistance Accuracy	±10%
Inductance Accuracy	±20%
Temperature Rise	80° C Max.(rated current,2 phase on)
Ambient Temperature	-20°C ~ +50°C
Insulation Resistance	100MΩMin. ,500VDC
Dielectric Strength	500VAC for one minute
Shaft Radial Play	0.02Max. (450 g-load)
Shaft Axial Play	0.08Max. (450 g-load)
Max. radial force	28N (20mm from the flange)
Max. axial force	10N
Rotation	CW (See from front flange)



Specifications

Model No	Rated Voltage (V)	Current /Phase (A)	Resistance /Phase (Ω)	Inductance /Phase (mH)	Holding Torque (g.cm)	# of Leads	Rotor Inertia (kg-m ²)	Shaft	Motor Length (mm)	Weight (kg)
FL28STH32-0956A	2.66	0.95	2.8	0.8	430	6	9x10 ⁻⁷	Single	31.5	0.11
FL28STH32-0956B	2.66	0.95	2.8	0.8	430	6	9x10 ⁻⁷	Double	31.5	0.11
FL28STH45-0956A	3.4	0.95	3.4	1.2	750	6	12x10 ⁻⁷	Single	44.5	0.14
FL28STH45-0674B	4.56	0.67	6.8	4.9	950	4	12x10 ⁻⁷	Double	44.5	0.14
FL28STH51-0956A	4.4	0.95	4.6	1.8	900	6	18x10 ⁻⁷	Single	50.5	0.20
FL28STH51-0956B	4.4	0.95	4.6	1.8	900	6	18x10 ⁻⁷	Double	50.5	0.20
FL28STH51-0674A	6.2	0.67	9.2	7.2	1200	4	18x10 ⁻⁷	Single	50.5	0.20

Dimension



Wiring Diagram

