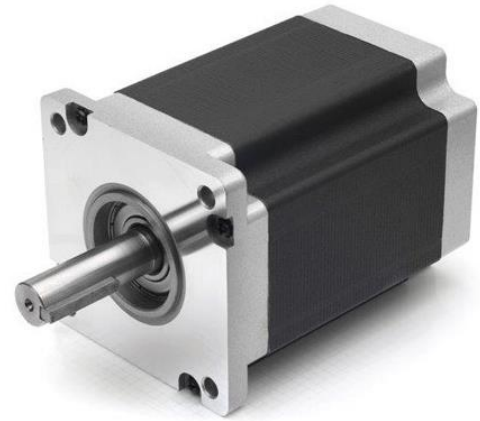


## 1.8° Size NEMA42 (110mm)

### High-torque Hybrid Stepper Motors

Item	Specifications
Step Angle	1.8 degree
Step Angle Accuracy	+/-5%, full step, no load
Radial Play	0.02mm @ 450g
Axial Play	0.08mm @ 450g
Max. Radial Force	330N @ 20mm from the flange
Max. Axial Force	100N
Dielectric Strength	1200VAC / 1s
Insulation Resistance	100mOhm, 500VDC
Ambient Temperature	-20°C to +50°C
Insulation Class	Class B

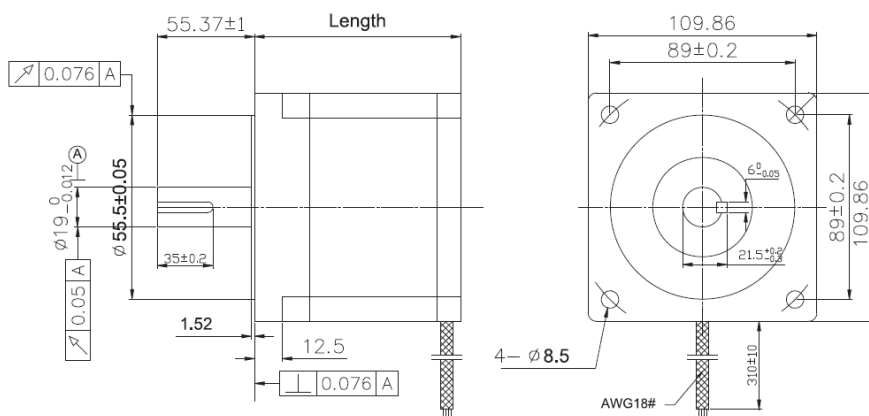


*This motor can be customised upon request*

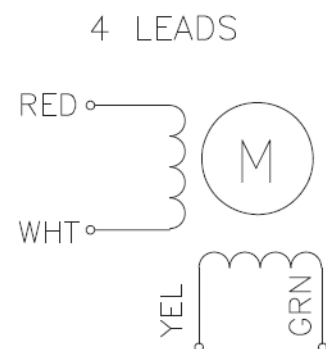
#### ● Motor Specifications

Model No. (Single Shaft)	Current /Phase A	Resistance /Phase Ω	Inductance /Phase mH	Holding Torque Nm	Detent Torque Nm	# of Leads	Rotor Inertia kg-cm <sup>2</sup>	Weight kg	Length mm
FL110STH99-5504A	5.5	0.7	9.8	11.2	0.29	4	5.5	5.0	99±1
FL110STH150-6504A	6.5	0.72	11.5	21.0	0.58	4	10.9	8.4	150±1
FL110STH201-8004A	8.0	0.67	12.0	28.0	0.74	4	16.2	11.7	201±1

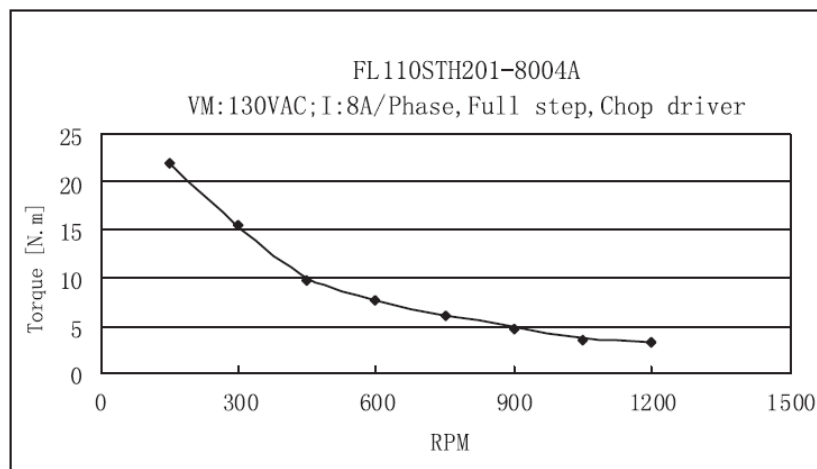
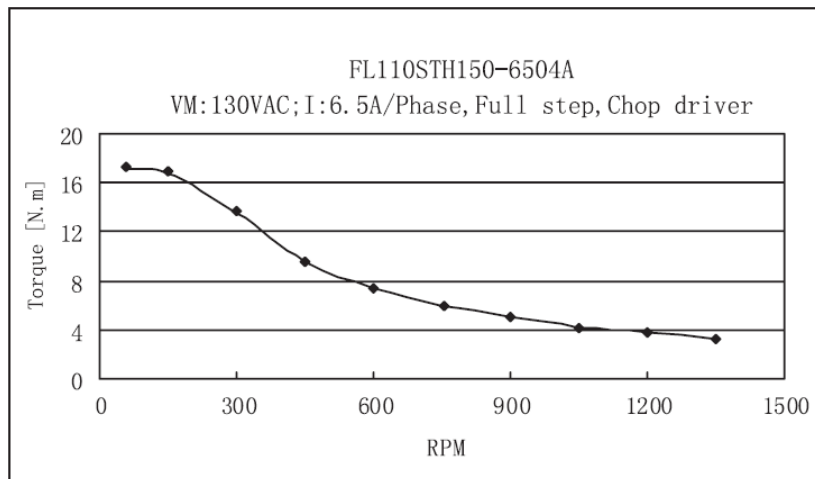
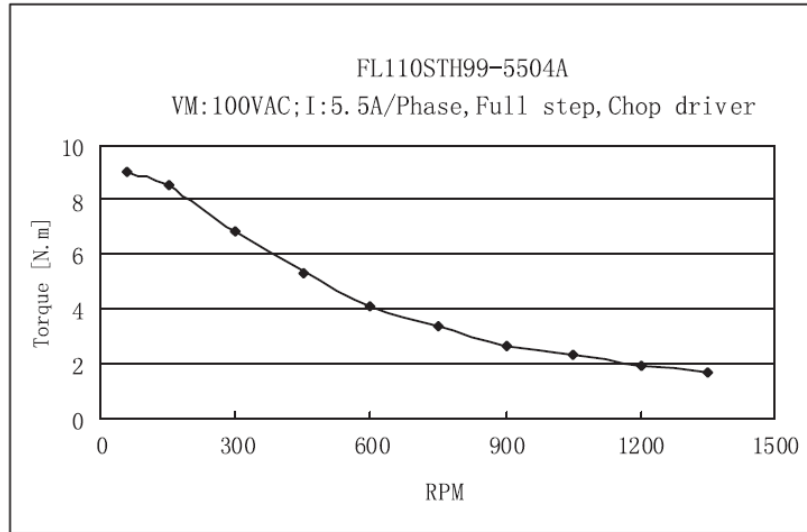
#### ● Dimension



#### ● Connection Diagram



● Pull-out Torque Curve



Copyright © 2019 Motion Control Products Ltd. All rights reserved.  
All data subject to change without notice in advance. (V2019.1112)