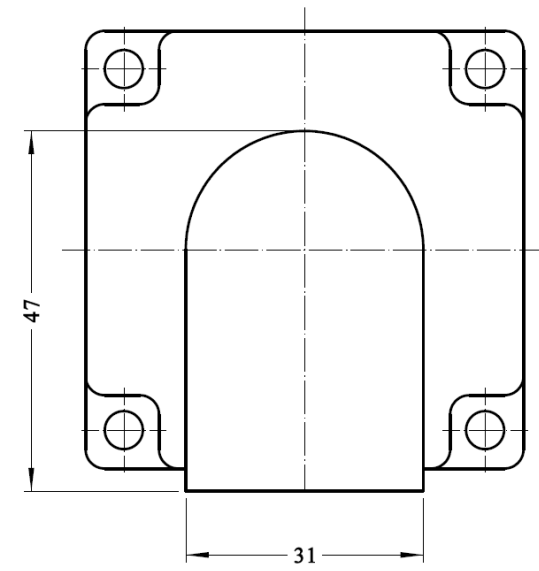
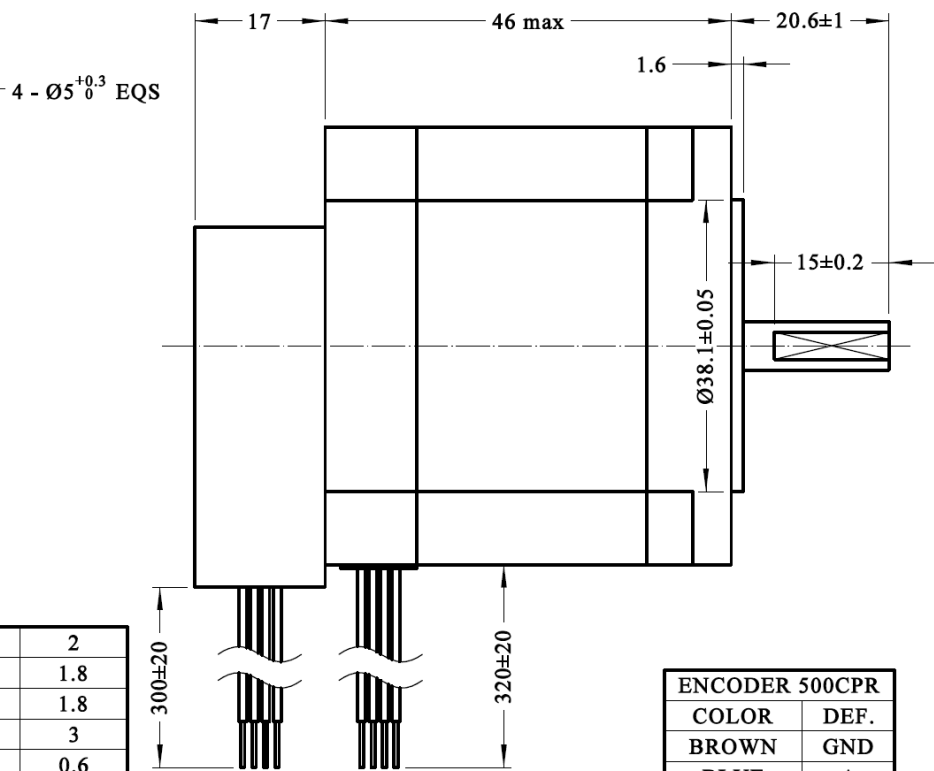
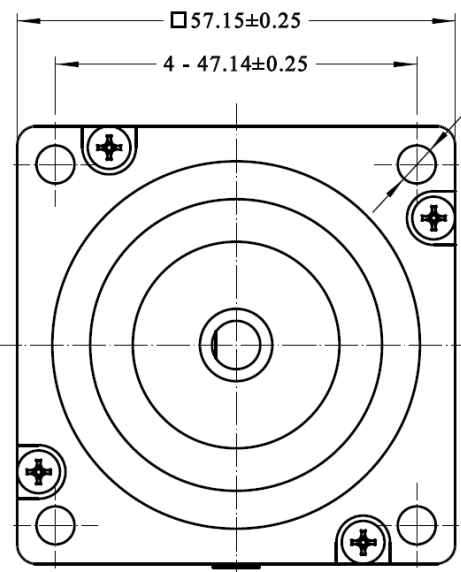
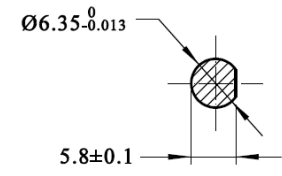

23H245-300-4D-EK25
 yyyy/mm/dd

Rev	Zone	Description	By	Date
0		Initial release	Randy	2016/10/12
1			Randy	
2			Randy	

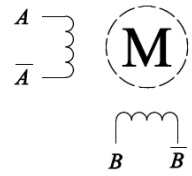


MOTOR PHASE	-	2
STEP ANGLE	°±5%	1.8
RATED VOLTAGE	V	1.8
RATED CURRENT	A	3
PHASE RESISTANCE	Ω±10% / 20C	0.6
PHASE INDUCTANCE	mH±20% / 1KHz	1.2
ROTARY INERTIA	g·cm ²	180
HOLDING TORQUE	Kg·cm	8
REDUCTION RATIO	-	-
INSULATION CLASS	-	B
TEMPERATURE RISE	°C	80
DIELECTRICAL STRENGTH	AC 500 V / 1 KHz / 1mA / 1s	
INSULATION RESISTANCE	MΩ / DC 500 V	100
DUTY TYPE	-	S1
MASS	Kg	0.52

ENCODER 500CPR	
COLOR	DEF.
BROWN	GND
BLUE	A
ORANGE	+5 V
YELLOW	B



WIRING






EXCITATION

UL 1430
20 AWG

	CW			→
BLACK	A	+	-	
GREEN	A	-	+	
RED	B	-	+	+
BLUE	B	+	-	-
	CCW			←

Motion Control Products Ltd. 11-15 Francis Avenue, Bournemouth, Dorset, UK, BH11 8NX
TEL.: +44 (0)1202 599922 www.motioncontrolproducts.com

	UNLESS OTHERWISE SPECIFIED ALL DIMENSIONS ARE IN MILLIMETERS AND TOLERANCES ARE AS BELOW PER ISO2768-CK.	DRAWN	Randy	DATE	2016/10/12	Proprietary and confidential: this drawing and the information contained herein is the property of Motion Control Products Ltd. It may not be disclosed to any third party without prior written consent.																				
		APPRVD		DATE																						
		MODEL	23H245-300-4D-EK25																							
	<table border="1"> <thead> <tr> <th colspan="2">LINEAR</th> <th colspan="2">ANGULAR</th> </tr> </thead> <tbody> <tr> <td>0 ~ 3</td> <td>±0.2</td> <td>0 ~ 10</td> <td>±1.5°</td> </tr> <tr> <td>3 ~ 6</td> <td>±0.5</td> <td>10 ~ 50</td> <td>±1°</td> </tr> <tr> <td>6 ~ 30</td> <td>±0.8</td> <td>50 ~ 120</td> <td>±30'</td> </tr> <tr> <td>30 ~ 120</td> <td>±1.5</td> <td>120 ~ 400</td> <td>±15'</td> </tr> </tbody> </table>	LINEAR		ANGULAR		0 ~ 3	±0.2	0 ~ 10	±1.5°	3 ~ 6	±0.5	10 ~ 50	±1°	6 ~ 30	±0.8	50 ~ 120	±30'	30 ~ 120	±1.5	120 ~ 400	±15'	SIZE	A4	SHEET	1 OF 1	 
LINEAR		ANGULAR																								
0 ~ 3	±0.2	0 ~ 10	±1.5°																							
3 ~ 6	±0.5	10 ~ 50	±1°																							
6 ~ 30	±0.8	50 ~ 120	±30'																							
30 ~ 120	±1.5	120 ~ 400	±15'																							
SCALE	1:1	REV	0																							